

Event Services

Wireless Connectivity

Seattle Convention Center (SCC) offers wireless internet access throughout the facility. With a wireless-enabled device (laptop, tablets, mobile phones/devices, etc.), anyone can log on to the network using one of the following access options:

Free WiFi Locations

The complimentary network access is best for basic browsing, posting to social media, texting and emailing. The speed is 512kbps up/down.

Open Public Areas:

BUILDING	LEVEL	AREA
Arch at 705 Pike	Level 1	Seating near Visit Seattle Concierge Desk
Arch at 705 Pike	Level 2	2AB Lobby and the International Meeting Place
Arch at 705 Pike	Level 3	3AB Lobby
Arch at 705 Pike	Level 4	Skybridge Lobby and seating near Atrium and restaurants

Within Rented Event Space:

BUILDING	LEVEL	AREA
Arch at 705 Pike	Level 6	6ABC Lobby and 6E Lobby
Arch at 800 Pike	Skagit	Lounge near the bottom of the stairs
Arch at 800 Pike	Yakima	Seating in southwest corner and near the lower level staircase
Arch at 800 Pike	Chelan	Four lounges
Arch at 800 Pike	Tahoma	Seating near the window and Tahoma 2

Paid WiFi Options

It is a credit card based system, and you can indicate how many days you need the service. When opening your internet browser, it will take you to a splash page where you can create an account. A receipt is sent to your e-mail address.

Instant Internet

Instant Internet provides a faster connection in the free WiFi locations for a cost of \$12.95/day. The speed is 768kbps up/down.

Exhibitor Internet

Exhibitor Internet provides access to the WiFi in meeting rooms, ballrooms and exhibit halls for \$79.00/day. It operates the same as Instant Internet. The speed is 1.54mbps up/down. Intended for browsing and similar activities, not business or commercial transactions.

How To Connect:

1. Open your WiFi options. The Free SCC WiFi network should appear. If it doesn't, try turning your WiFi off and back on. Click on the network to prompt the splash page.
2. When the splash page appears, follow the prompts to connect. If the splash page does not appear, open a browser (i.e. Safari, Chrome) and hit refresh.
3. You will receive a notification that you are connected.

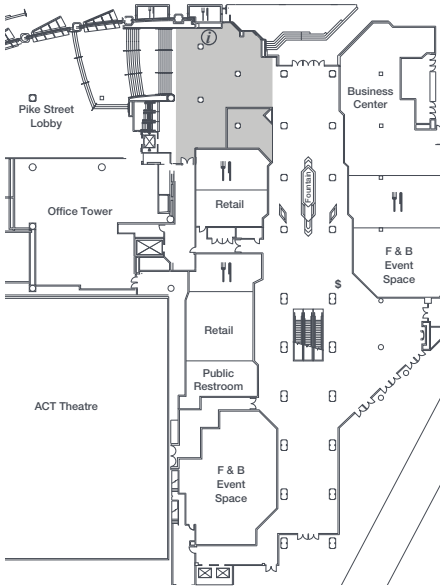
High Capacity Wireless Capabilities

- Show Management: contact SCC's exclusive provider of telecommunications and internet services at 206-505-5490 or wscinfo@smartcity.com
- Exhibitors: contact us at 206-694-5015 or exhibitor.services@wscc.com
- Attendees: contact Show Management

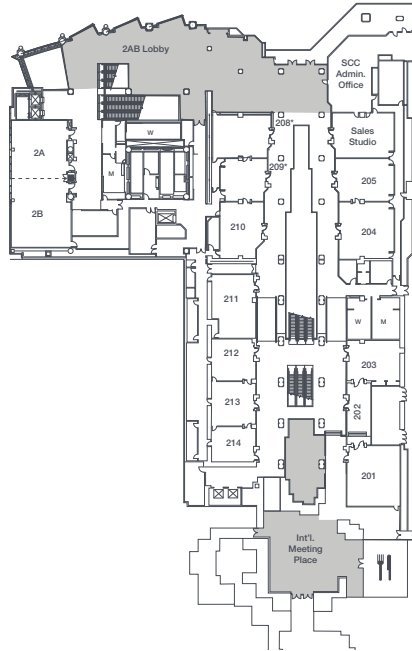
Event Services
Wireless Connectivity

Arch at 705 Pike | Free WiFi Locations

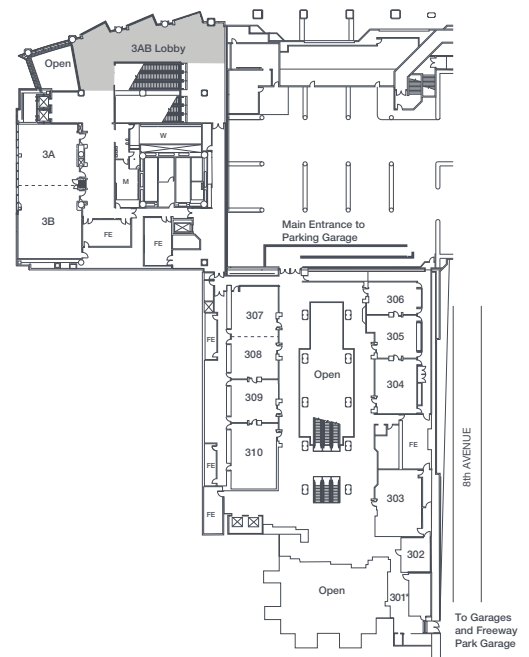
SCC Level 1



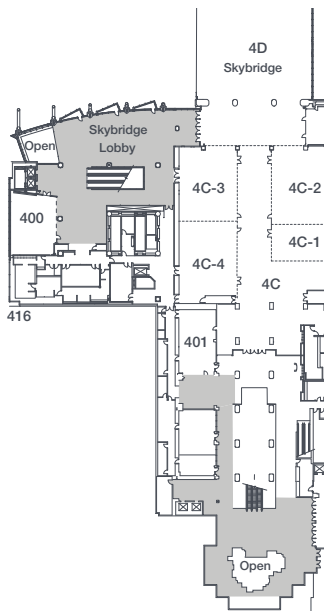
SCC Level 2



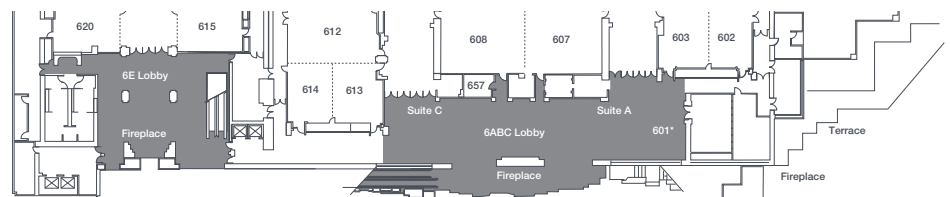
SCC Level 3



SCC Level 4



SCC Level 6



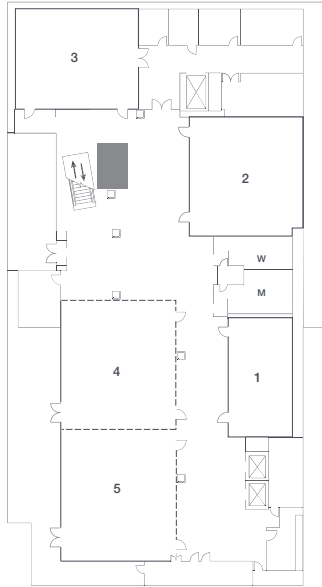
LEGEND

- Open to public
- Available with adjacent event rental space

Event Services
Wireless Connectivity

Arch at 800 Pike | Free WiFi Locations

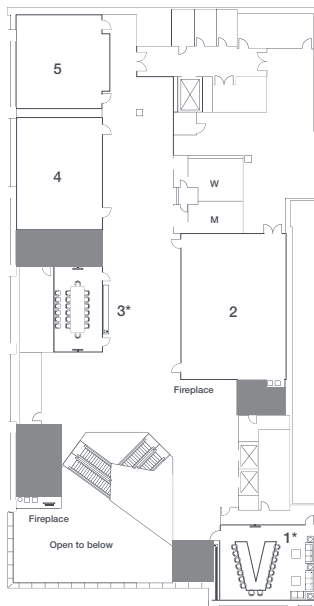
Skagit (L1)



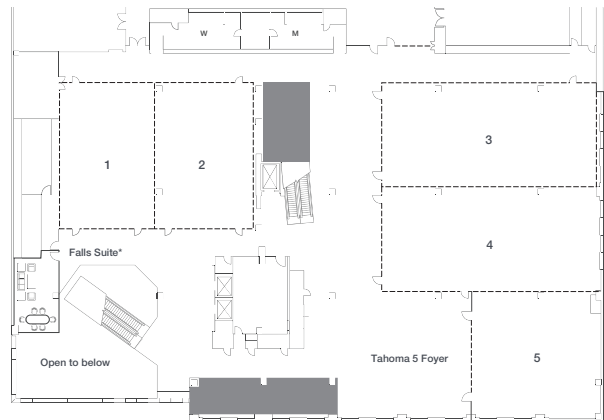
Yakima (L1)





Chelan (L2)



Tahoma (L3)



LEGEND

-  Open to public
-  Available with adjacent event rental space

Event Services

Wireless Connectivity

Simultaneous Device Capacity by Space

SCC's state-of-the-art equipment and services include:

- 230 Xirrus Wireless Access Points
- Dual 10 gig circuits to the internet
- Single-mode fiber infrastructure throughout the building
- Complete Cisco Network backbone
- Cat6 jacks and cabling provided to the end-user

SCC's network is capable of supporting over 40,000 wireless connections simultaneously. Below is the capacity per area that SCC is capable of supporting. However, we also have supplemental access points that we can deploy to specific areas should the need arise for more coverage.

BUILDING	LEVEL	AREA	DEVICE CAPACITY PER AREA
Arch at 705 Pike	1	Public spaces	890
	2	Public spaces	1,400
		Rooms 201 – 213	120 each
		Rooms 2A & 2B	120 each
	3	Public spaces	1,150
		Rooms 301 – 310	120 each
		Rooms 3A & 3B	120 each
	4	Public spaces	890
		Rooms 400 & 401	120 each
		Rooms 4C-1 – 4C-4	256 each
		Exhibit Hall 4A	3,500
		Exhibit Hall 4B	4,000
		Exhibit Hall 4C	1,280
		Exhibit Hall 4D	512
		Exhibit Hall 4E	4,000
	Exhibit Hall 4F	2,500	
	5	Rooms 504 – 508	50 each
	6	Public spaces	760
		Rooms 601 - 620	120 each
Rooms 6A, 6B, 6C & 6E		1,000 each	
Ballroom 6ABCE		4,000	
Arch at 800 Pike	All	Public spaces	380 each
	All	Rooms	250 each